

New  
**Taper-Tech®**  
Design

## BRASS COMPRESSION GLANDS

**SANS 1213 / IP68 / SANS 62444**



## TUFFLON COMPRESSION GLANDS

**IP68**



XPL/20345/19.0312  
XPL/18849/17.1188  
XPL/18849/17.1182

BRASS  
COMPRESSION  
GLANDS

IP68 (150m)  
SANS 1213  
SANS 60529  
SANS 62444

ANCHORAGE CATEGORY B  
IMPACT CATEGORY 8



SABS 14-071  
TUFFLON  
COMPRESSION  
GLANDS  
IP68  
SANS 60529

## FEATURES & BENEFITS

### “TAPER-TECH” BRASS COMPRESSION GLANDS

- These heavy duty Brass Compression Glands, eliminate cable damaging weak-back bushes.
- Each gland size accommodates an unmatched range of cable sizes.
- IP68 (150m of water head!) No other compression gland comes near.
- Can also accommodate Flat Twin & Earth and Aerial Bundled cables. (Adaptor Bush required).
- NPT & Pg Threads available.

### TUFFLON PLASTIC COMPRESSION GLANDS

- Tufflon glands are tough, chemical resistant & will not jump threads.
- Neat and lightweight, will take a lot of punishment.
- Can also accommodate Flat Twin & Earth and Aerial Bundled cables. (Adaptor Bush required).
- No shrouds necessary.

POLICY  
STATEMENT

“The performance of our products must exceed all others on the world market”

KGM Pratty  
CEO

## PRATLEY TUFFLON COMPRESSION GLANDS

### COMPRESSION BUSH

Specially formulated, high performance creep resistant rubber.

### PLASTIC SKID WASHER

Ensures bush compression without excessive torque or damage to the bush.

### COMPRESSION NUT

Made from "Tufflon" and will not jump threads.

### LOCKNUT

Supplied complete with high strength locknut. Locknuts are made of Tufflon and will not jump threads.

### GLAND BODY

Tough "Tufflon" engineering plastic.

**ALMOST UNBREAKABLE TOUGH PLASTIC!**

### WHITE



### GREY



### BLACK



These are real "toughies"! They maintain an IP seal, are chemical resistant and will not jump threads when tightened. Typically used on appliances, in chemical plants, in sewerage plants, in abattoirs and similar. For cables smaller than 4.0 mm a special N° 0sxs (0s Extra small) compression kit can be used. (See accessories Pg. 4)

IP seal means equipment protection when washing down or when condensation is present.

### TUFFLON GLAND SELECTION TABLE

Gland Size	00	0s	0L	1	2
Nipple Thread (mm)	16.0	20.0	20.0	20.0	25.0
Cable Dia. Range (mm)	Min.	4.0	4.0*	6.5	8.5
	Max.	9.0	9.0	11.0	13.0
Cat. N° WHITE	75101	75107	75102	75103	75108
Cat. N° GREY	75001	75007	75002	75003	75008
Cat. N° BLACK	75201	75202	75203	75204	75205

\* Can be reduced to 3 mm by using a N° 0sxs (N° 0s Extra small) Compression Kit (see accessories Pg. 4).

## PRATLEY "Taper-Tech" BRASS COMPRESSION GLANDS



**IP68 TO 150m WATER HEAD!**

**New Taper-Tech Design**

These Glands are manufactured from nickel plated brass and will accommodate all circular cables with outside diameters from 3.0 mm to 73.8 mm (See Pg. 4 for non circular cables). They are IP68 rated to a whopping 150m! and are supplied complete with nipple gasket and nickel plated Brass Locknuts.

There are 13 sizes, ranging from No. 00s to No. 8 (See table below).

### WATERPROOFING IP66/68

Rated IP68 to a whopping 150m of water head! Pratley "Taper-Tech" Compression Glands automatically seal the bore of the gland against the ingress of pressurised water and ambient moisture.

Waterproofing Shrouds are not necessary. However, should a shroud be required for aesthetic reasons the Pratley "Taper-Tech" Compression Gland can accommodate one in the groove.

### NPT, PG, IMPERIAL THREADS & LONG NIPPLES

"Taper-Tech" gland sizes 00s, 0, 1 & 2 are also available ex-stock with Pg and Npt threads. (See selection tables below).

Pg and Imperial Threads are also accommodated by using Pratley Adjustable Cable Glands (see Pg. 4) fitted with compression conversion kits and thread adaptors. Exceptionally thick gland plates can also be accommodated by fitting Adjustable Glands with "long nipples".

### METRIC GLAND SELECTION TABLE • SIZES 00s - 2

Gland size	00s	00	0xs	0s	0	1	2
Nipple Thread (mm)	16.0	16.0	20.0	20.0	20.0	20.0	25.0
Cable Dia. Range (mm)	Min.	3.0	4.5	3.0	4.5	8.0	10.0
	Max.	5.0	9.2	5.0	9.2	11.1	14.7
Catalogue N°	12064	12067	12065	12066	12068	12069	12070
Usual Pack Qty.	50	50	50	50	10	10	10

### METRIC GLAND SELECTION TABLE SIZES 3 - 8

Gland size	3	4	5	6	7	8
Nipple Thread (mm)	32.0	40.0	50.0	63 mm	75 mm	82 mm
Cable Dia. Range (mm)	Min.	19.0	26.0	34.0	43.4	55.8
	Max.	26.7	35.0	44.0	55.8	67.5
Catalogue N°	12071	12072	12074	12075	12077	12086
Usual Pack Qty.	5	5	2	1	1	1

### PG GLAND SELECTION TABLE

Gland size	00s	00	0xs	0s	0	1	1	2
Nipple Thread PG	Pg 11	Pg 11	Pg 13.5	Pg 13.5	Pg 13.5	Pg 13.5	Pg 16	Pg 21
Cable Dia. Range (mm)	Min.	3.0	4.5	3.0	4.5	8.0	10.0	14.0
	Max.	5.0	9.2	5.0	9.2	11.1	14.7	19.9
Catalogue N°	60071	60072	60073	60074	60075	60076	60077	60078
Usual Pack Qty.	10	10	10	10	10	10	10	10

### NPT GLAND SELECTION TABLE

Gland size	00s	00	0xs	0s	0	1	2
Nipple Thread NPT	¾"NPT	¾"NPT	½"NPT	½"NPT	½"NPT	½"NPT	¾"NPT
Cable Dia. Range (mm)	Min.	3.0	4.5	3.0	4.5	8.0	10.0
	Max.	5.0	9.2	5.0	9.2	11.1	14.7
Catalogue N°	60079	60080	60081	60082	60083	60084	60085
Usual Pack Qty.	10	10	10	10	10	10	10

## "TaperTech" DESIGN\ BRASS COMPRESSION GLANDS

**LOCKNUT** All glands are supplied complete with nickel-plated brass locknut. Gland sizes 7 & 8 are supplied with castellated locknuts for ease of tightening.

### GASKET

All glands are supplied complete with special feathered gasket. Ensures IP68 seal integrity.

### SPIGOT

For perfect fitting into larger size knockout hole.

### GLAND BODY

Strong, generously dimensioned nickel plated brass.

### COMPRESSION NUT

Nickel plated brass.

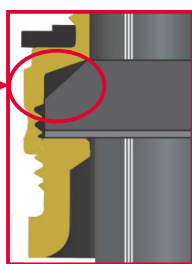
### PLASTIC SKID WASHER

## UNIQUE "Taper-Tech" CLAMPING SYSTEM

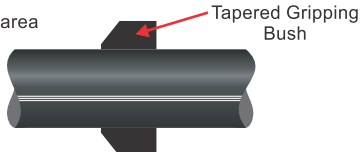
### DIFFERENTIAL TAPER

- Specially formulated, high performance creep resistant rubber (-20°C to 125°C).
- Due to the unique differential Taper Design, the gripping force of the bush increases proportionally with the axial load on the cable. This means that the cable remains safely secured, even at very high pull-out loads, without damaging the cable.

### THE BETTER SOLUTION



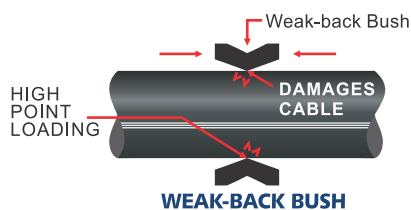
Large surface area spreads the gripping load and prevents cable damage.



### THE PRATLEY "TAPER-TECH BUSH SOLUTION"

## DO AWAY WITH "CABLE DAMAGING WEAK-BACK BUSHES"

Weak-back bushes damage the cable and are typically encountered on old compression gland designs.



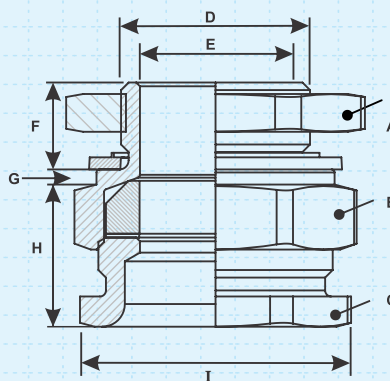
DISTORTED AND DAMAGED CABLE



Weak-back Bush

## DIMENSIONS & SPECIFICATIONS

### "TaperTech" BRASS COMPRESSION GLANDS



These weights are for metric glands only and should not be used in calculating shipping costs.

### PACKAGING DATA

Gland size	Glands per Pack	Packs per Carton	Carton Dimensions (mm)	Weight (kg) per Pack
00s	20	10	260 x 260 x 170	0.85
00	50	10	260 x 260 x 170	2.1
0xs	50	10	260 x 260 x 170	2.99
0s	50	10	260 x 260 x 170	2.3
0	10	N/A	145 x 160 x 145	0.56
1	10	N/A	170 x 155 x 180	0.64
2	10	N/A	170 x 205 x 190	1.04
3	5	N/A	220 x 50 x 50	0.77
4	5	N/A	270 x 65 x 55	1.56
5	2	N/A	135 x 80 x 65	0.90
6	1	18	260 x 260 x 170	0.78
7	1	6	260 x 260 x 170	1.32
8	1	5	260 x 260 x 170	1.44

### DIMENSIONS (mm)

Gland size	00s	0xs	0	1	2	3	4	5	6	7	8
A - Compression Nut	A/F	20.0	20.0	20.0	25.0	32.0	40.0	50.0	61.2	76.0	95.0
	A/C	22.2	22.2	22.2	27.8	35.9	45.2	56.7	69.6	86.7	108.0
B - Body	A/F	22.0	22.0	22.0	27.0	33.0	40.0	52.0	63.0	80.0	95.0
	A/C	24.6	24.6	24.6	30.4	37.4	45.2	59.3	72.0	91.6	108.0
C - Locknut	A/F	19.0	27.0	27.0	35.0	41.0	55.0	65.0	80.0	95.2	96.6
	A/C	21.9	31.2	31.2	31.2	40.4	47.3	63.5	75.0	92.4	111.5
D - Nipple Thread		M16x1.5	M20x1.5	M20x1.5	M20x1.5	M25x1.5	M32x1.5	M40x1.5	M50x1.5	M63x1.5	M75x1.5
E - Nipple Bore		9.3	9.3	11.2	14.8	20.0	27.4	35.1	44.1	55.9	67.6
F - Nipple Length		8.0	11.0	11.0	11.0	11.5	12.5	13.5	14.5	16.5	25.0
G - Spigot		N/A	N/A	1.5	1.5	2.0	2.0	2.0	2.0	2.0	2.5
H - Max Protrusion(H+G)		18.0	17.5	17.5	18.7	20.8	26.4	33.2	36.8	40.5	57.2
F + H - Overall Length		26.1	28.5	28.5	29.7	32.3	38.9	46.7	51.3	57.0	82.2
I - Overall Diameter - A/C		24.6	24.6	24.6	30.4	37.4	45.2	59.3	72.0	91.6	102.6

### "Taper Tech" BRASS COMPRESSION GLAND

#### SPECIFICATION GUIDE

##### The compression gland must:

- Be supplied with a feathered nipple gasket.
- Not employ a weak-back bush design.
- Employ a "Taper-Tech" cable clamping system.
- Comply with SANS 1213 for mechanical cable glands.
- Be manufactured from brass and be nickel plated.
- Be supplied complete with locknut.
- Be supplied with a plastic skid washer.
- Have a male thread Compression Nut.
- Be IP 66/68. Tested to 150m of water head.

## TUFFLON COMPRESSION GLANDS

### DIMENSIONS (mm)

Gland size	00	0s	0L	1	2
A - Compression Nut	A/F	17.0	17.0	19.0	22.0
	A/C	19.6	19.6	21.9	25.4
B - Body	A/F	19.0	19.0	22.0	25.6
	A/C	21.9	21.9	25.4	29.6
C - Locknut	A/F	22.0	27.0	27.0	27.0
	A/C	25.4	31.2	31.2	31.2
D - Nipple Thread	M16	M20	M20	M20	M25
E - Nipple Bore	9.0	9.0	11.0	13.0	19.2
F - Nipple Length	10.0	10.0	10.0	13.0	12.7
G - Spigot	N/A	N/A	N/A	0.8	1.0
H - Max Protrusion	19.5	20.3	21.1	22.0	23.8
I - Overall Diameter - A/C	25.4	31.2	31.2	31.2	38.1

### TUFFLON COMPRESSION GLAND

#### SPECIFICATION GUIDE

##### The Plastic compression gland must:

- Not employ a weak-back bush design.
- Be supplied complete with locknut.
- Be made from tough engineering plastic "Tufflon". Not PVC.
- Not jump threads when tightened.
- Incorporate a skid washer.
- Have a male thread compression nut.

### PACKAGING DATA

Gland size	Glands per Bag	Bags per Carton	Carton Dimensions (mm)	Weight (kg) per Bag
00	50	20	340 x 315 x 235	0.36
0s	50	16	340 x 315 x 235	0.48
0L	50	16	340 x 315 x 235	0.54
1	50	12	340 x 315 x 235	0.62
2	25	16	340 x 315 x 235	0.42

(Glands are packed in plastic bags)



# ACCESSORIES

## "Taper-Tech" BRASS COMPRESSION GLANDS

### ADAPTOR BUSHES FOR FLAT TWIN AND EARTH CABLES

Pratley "Taper-Tech" Brass Compression glands may be adapted for use with Flat Twin and Earth cables by replacing the standard Compression Bush, supplied with the Gland, with a special Adaptor Bush.



ADAPTOR BUSHES FOR FLAT TWIN AND EARTH CABLES				
Gland size	00	0 & 1	2	3
Catalogue No.	12100	12101	12102	12103
Usual Pack Qty.	10	10	10	10

## "Taper Tech" BRASS COMPRESSION GLAND FOR AERIAL BUNDLED CABLES

A special version of No. 4 brass gland for use with Aerial Bundled cable incorporates a clover shaped bush. These glands are supplied complete with ABC Bush.



ABC COMPRESSION GLAND		
Gland size	4	4
ABC Size	35 mm <sup>2</sup>	70 mm <sup>2</sup>
Catalogue No.	12079	12080
Usual Pack Qty.	1	1

## EXTRA NIPPLE SEALING GASKETS

Tough plastic gaskets incorporate a special face "feather" for perfect sealing.

TOUGH PLASTIC GASKETS (Black)						
Gasket size	20mm	25mm	32mm	40mm	50mm	63mm
Catalogue No.	39001	39002	39003	39004	39005	39006

Gasket size	75mm	16mm	Pg.13.5	Pg.16	25mm	Pg.21	Pg.29
Catalogue No.	39007	39008	39012	39010	39011	39013	39014
Usual Pack Qty.	100	100	100	100	100	100	100

## NICKEL-PLATED BRASS LOCKNUTS

Glands are supplied complete with locknuts. However locknuts are also available separately.



Nickel-plated Brass Locknut 00 - 8

PRATLEY NICKEL-PLATED BRASS LOCKNUTS										
Size	00	0	1	2	3	4	5	6	7	8
Nipple Thread	16mm	20mm	20mm	25mm	32mm	40mm	50mm	63mm	75mm	82mm
Catalogue No.	02879	02880	02880	02882	02883	02884	02885	02886	02118	02119

## NICKEL-PLATED STEEL LOCKNUTS

Not to be used with single core cable due to Eddy current heating.



Nickel-plated Steel Locknuts 0 - 6

PRATLEY NICKEL-PLATED STEEL LOCKNUTS										
Size	0	1	2	3	4	5	6			
Nipple Thread	20mm	20mm	25mm	32mm	40mm	50mm	63mm			
Catalogue No.	02111	02111	02113	02114	02115	02116	02117			

# ANOTHER OPTION

## PRATLEY ADJUSTABLE CABLE GLAND FITTED WITH A COMPRESSION CONVERSION KIT

Pratley Adjustable Glands are designed for SWA Cable. However all sizes can be easily converted for use with unarmoured cable. This is achieved by means of an inexpensive **Compression Conversion Kit**. This system effectively reduces the gland inventory required in industrial plant stores. The loose nipple of an Adjustable Gland (size 1 and above) can also be replaced with a longer nipple or a thread adaptor to fit Pg or Imperial threads. This option permits the glanding of unarmoured cable to apparatus with thick gland plates or Pg or Imperial threads. There are two sizes of kit for each size of gland. The correct kit is selected according to the outside diameter of the unarmoured cable.

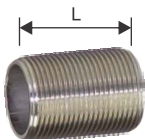
The conversion kit, replaces the Cone Bush of the Pratley Adjustable Gland.

SIZE SELECTION CHART - COMPRESSION CONVERSION KITS										
Size: Small	0S	1S	2S	3S	4S	5S	6S	7S	8S	
Cat. No.	13074	13083	13084	13085	13086	13087	13088	13089	13090	
Cable Dia. Ø	Min.	6.0	12.7	15.8	20.5	26.4	34.8	43.4	55.9	67.6
	Max.	9.4	14.3	17.3	23.3	30.6	38.0	49.6	60.6	69.9
Size: Large	0L*	1L	2L	3L	4L	5L	6L	7L	8L	
Cat. No.	13075	13076	13077	13078	13079	13080	13081	13082	13091	
Cable Dia. Ø	Min.	9.5	14.4	17.4	23.4	30.7	38.1	49.7	60.7	70.0
	Max.	12.6	15.7	20.4	26.3	34.7	43.3	55.8	67.5	73.8
Usual Pack Qty.	10	10	10	10	10	10	10	10	10	10

\* NOTE: The No. 0L kit does not require a retaining washer. It is supplied with a tapered ring and rubber bush only.

## PRATLEY EXTENDED LENGTH NIPPLES

These nipples replace the standard nipple when required with exceptionally thick gland plates.



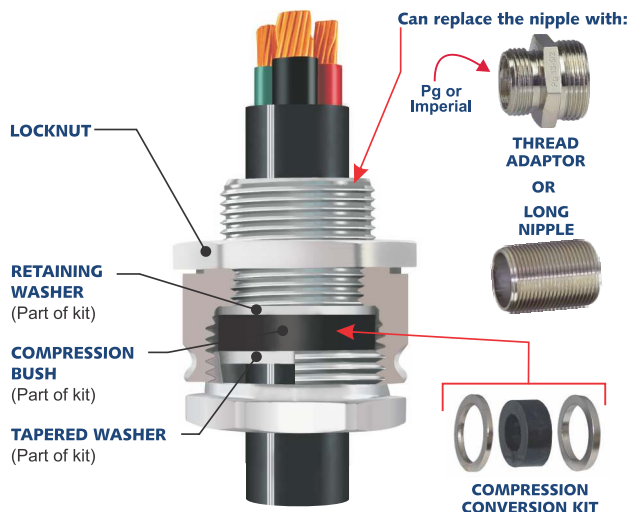
EXTENDED LENGTH NIPPLES					
Size	1	2	3	4	5
Nipple Thread	20 mm	25 mm	32 mm	40 mm	50 mm
Length (mm)	31.0	35.0	39.0	45.0	52.5
Catalogue No.	79031	79032	79033	79034	79035
Usual Pack Qty.	25	25	10	10	2

## PRATLEY THREAD ADAPTORS

Used to adapt the gland to Pg. or Imperial threaded entries. Adaptors replace the standard nipple on the gland so that the gland may be screwed directly into Pg. (DIN standard) or Imperial threaded entries.



Pg or Imperial



Pg. ADAPTORS										
Gland Size	1	1	1	2	2	2	3	3	4	
To Pg. →	13.5	16	21	13.5	16	21	21	29	29	
Catalogue No.	29001	29003	29006	29002	29004	29007	29005	29008	29009	
Usual Pack Qty.	10	10	10	10	10	10	10	10	10	

Pg. ADAPTOR SIZES	
Pg. Size	Entry Ø (mm)
9	14.53
11	17.93
13.5	19.06
16	21.16
21	26.78
29	35.48

IMPERIAL ADAPTORS				
Gland Size	1	2	3	4
To →	¾"	1"	1¼"	1½"
Catalogue Number	34026	34027	34028	34029
Usual Pack Quantity	10	10	10	10

