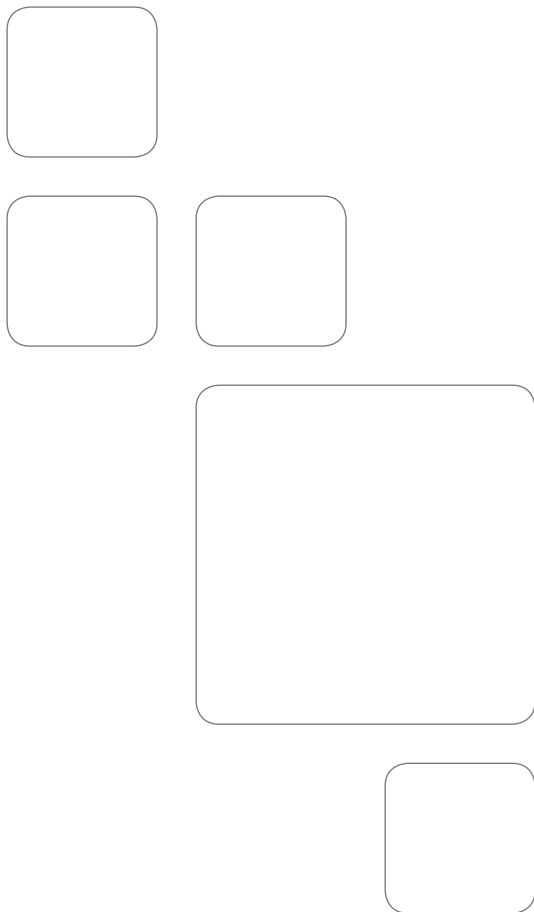




## sollysta

wiring accessories





# sollysta

## style with substance

Sollysta has been designed to inspire confidence. Its modern, yet soft styling blends with today's interiors and hints at its reliability. Acting as the link to power and lighting, whether for home entertainment or everyday tasks, you must have confidence in the quality of wiring accessories.

They are a part of our everyday life and are always visible. Style and substance are a must. Sollysta's fresh, rounded appearance suggests an understated quality that is confirmed when you use them.

Step closer and you will not be disappointed. Attention to detail is obvious, even the rockers have a subtle curved profile with rounded edges. Set in a slight indentation they suggest a softness reminiscent of furnishings.

Take a moment to switch the rocker and you will notice its ergonomics. Its shape feels comfortable and you will be rewarded with a solid click, providing a positive confirmation that you have completed the switching action.

Small details we know, but this is what sets sollysta apart.



**sollysta**  
white moulded



**sollysta**  
grid



# sollysta

## elegant functionality

First impressions count. When you first step into a building whether it is a home or an office you form an impression. That impression could make the difference between a building remaining empty or not.

Makeovers and advanced technology have transformed the way that we use electricity. Wiring accessories are a vital link in how we use a space, both for leisure and work.

# Grid

## Wiring accessories

In addition to the aesthetics for the home owner the grid accessories have been designed to make the installation easier for electrical contractors.

The robust frames do not distort during fixing, and the switch modules can be easily clipped in and out from the front making the installation much quicker and easier.

Due to the frame design easy access to the switch terminals is even possible when the frames are fitted and maximum cabling space is available thanks to the shallowest switches on the market.

A wide range of modules is available together with an extensive range of markings including specials through our bespoke service (contact Technical Support for further details).



### The advantages for you:

- Switch modules are the shallowest in the market, maximising cable space in the back box.
- Switch modules can be wired in the hand or when clipped in to the frame.
- Frame will not bend or deform during installation.
- Aesthetics match and complement the white moulded range.

### Technical data:

- All products have been independently tested and certified.
- Switches are rated at 20AX for maximum switching capability.
- Range includes fuse carriers, key switches and retractive switches.
- Faceplates are made from high grade urea ensuring excellent scratch and impact resistance.

# Quick tips

1



## Frames

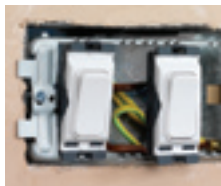
Robust frames do not distort during installation.



## Shallow

The switches are the shallowest in the market to give the maximum cabling space.

2



## Clip

Switch modules clip in and out of the frames from the front for easy fixing.



## 20AX

All switches are rated at 20AX for maximum switching capability.

3



## Switch terminals

The frame design allows for easy access to the switch terminals even when fitted in the frame.



## Markings

A wide range of popular markings are available, and specials are available with our bespoke marking service (contact Technical Support for further details).

4



## Earth

Earth terminals are securely fixed with easy accessibility for wiring.



## Wide range

The wide range of modules includes double pole and single pole switches, key switches and fuse carriers.



# sollysta grid

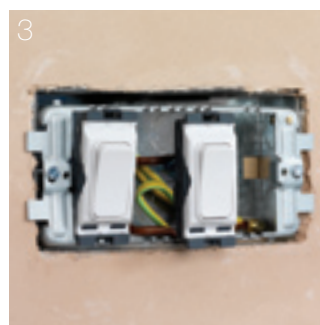
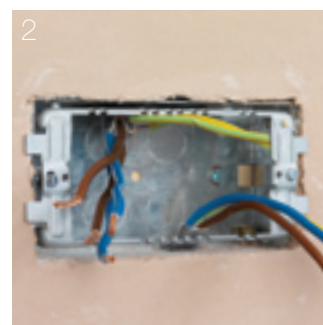
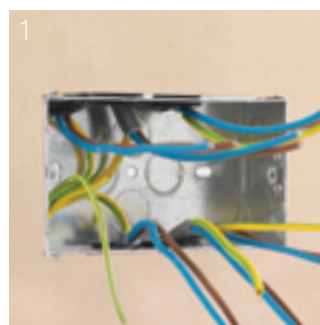


The sollysta range of grid switches are ideal for domestic and commercial applications.



Frontplates are available to complement our new range of sollysta wiring accessories.

Durability and safety have been paramount in the design and development of the sollysta grid range so that, once installed, you can have every assurance that the products will live up to your expectations.



The four step assembly process allows the installer flexibility at every stage.



Simple installation with style  
Modules can easily be upgraded without the need to remove the mounting frame.

- Complies with BS EN 606691-1 switches, BS 5733 fuse carrier.
- Shallowest switch modules for ease of installation.
- Modules clip from the front for ease of installation and maintenance.
- Terminal screw can be accessed with modules clipped into frames.
- Frames locate to finished wall level.
- Frames clip to ease alignment for 6 gang and 8 gang applications.



WMGP3

### Grid Plates

Description	Cat ref.
1 Gang White Moulded Plate	<b>WMGP1</b>
2 Gang White Moulded Plate	<b>WMGP2</b>
3 Gang White Moulded Plate	<b>WMGP3</b>
4 Gang White Moulded Plate	<b>WMGP4</b>
6 Gang White Moulded Plate	<b>WMGP6</b>
8 Gang White Moulded Plate	<b>WMGP8</b>



WMGF34

### Grid Frames

Description	Cat ref.
1 Gang Frame	<b>WMGF1</b>
2 Gang Frame	<b>WMGF2</b>
3 / 4 Gang Frame	<b>WMGF34</b>



WMGSDP2/HB



WMGKS

### Grid Switches

Description	Cat ref.
20AX 2 Way Single Pole Switch	<b>WMGS12</b>
20A Intermediate Switch	<b>WMGS16</b>
20A 2 Way Retractive Grid Switch	<b>WMGS22R</b>
20A 1 Way Double Pole Switch	<b>WMGSDP2</b>
20A Double Pole Key Switch	<b>WMGKS</b>
20A 1 Way Double Pole marked 'Cooker Hood'	<b>WMGSDP2/CHD</b>
20A 1 Way Double Pole marked 'Dish Washer'	<b>WMGSDP2/DW</b>
20A 1 Way Double Pole marked 'Extract Fan'	<b>WMGSDP2/EF</b>
20A 1 Way Double Pole marked 'Fridge Freezer'	<b>WMGSDP2/FF</b>
20A 1 Way Double Pole marked 'Freezer'	<b>WMGSDP2/FRE</b>
20A 1 Way Double Pole marked 'Fridge'	<b>WMGSDP2/FRI</b>
20A 1 Way Double Pole marked 'Hob'	<b>WMGSDP2/HB</b>
20A 1 Way Double Pole marked 'Heating'	<b>WMGSDP2/HTG</b>
20A 1 Way Double Pole marked 'Microwave'	<b>WMGSDP2/MW</b>
20A 1 Way Double Pole marked 'Tumble Dryer'	<b>WMGSDP2/TD</b>
20A 1 Way Double Pole marked 'Waste Disposal'	<b>WMGSDP2/WD</b>
20A 1 Way Double Pole marked 'Washing Machine'	<b>WMGSDP2/WM</b>

### Accessories

Description	Cat ref.
13A Fuse Carrier	<b>WMGFU13</b>
Blank Module	<b>WMGB1</b>



WMGFU13