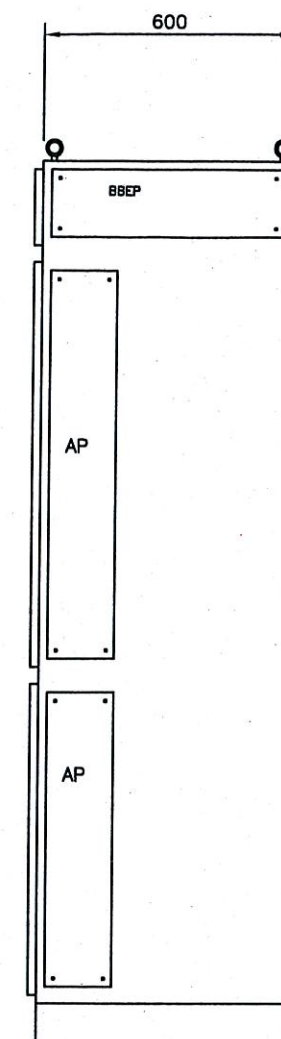
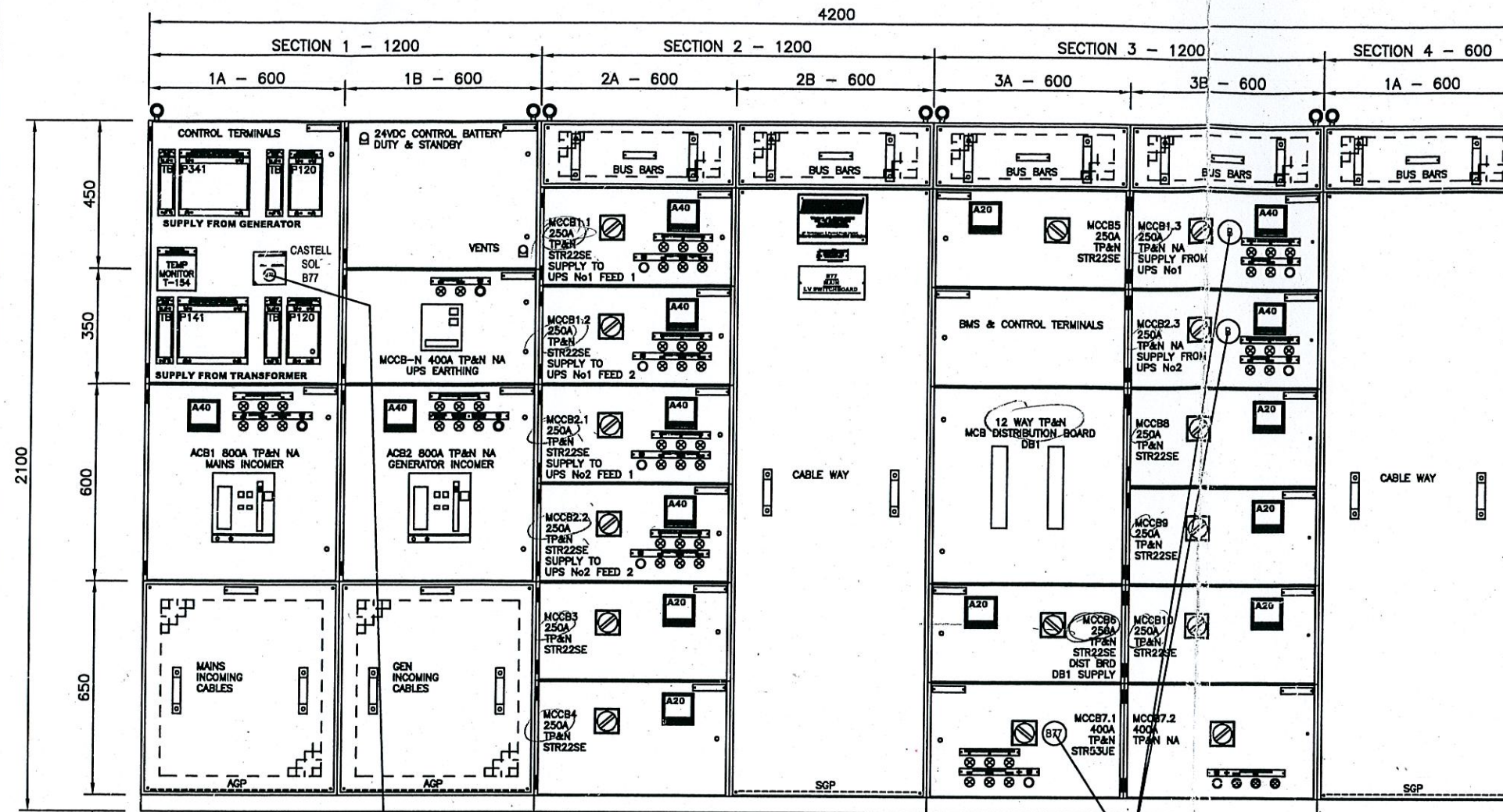


FIRST ANGLE PROJECTION UNLESS OTHERWISE STATED



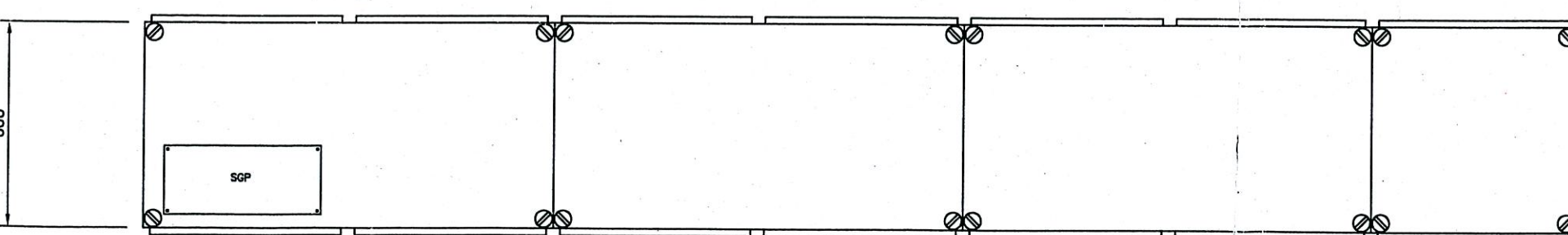
NOTES

- 1) - DESIGNED TO BSEN 60439-1 FORM 4 TYPE 2 FRONT ACCESS.
- 2) - BUS BAR - 50KA RMS SYM 1SEC 2x30x10 SOCOMEK - SBC10 SUPPORTS.
MAIN EARTH BAR - 50x10mm.
- 3) - ACB MANUFACTURE - M&G NW WITHDRAWABLE RANGE.
- 4) - MCCB MANUFACTURE - M&G NS WITHDRAWABLE RANGE.
- 5) - DOORS LOCKABLE IF REQUIRED.
- 6) - INCOMING/OUTGOING CABLES BOTTOM ENTRY/EXIT.
- 7) - CUBICLE PAINT COLOUR - CORNFLOWER BLUE BS4800 SHADE 20:E:51 SEMI GLOSS.
- 8) - INGRESS PROTECTION - IP31.
- 9) - CUBICLE:-
METALWORK.
-2mm THICK MILD STEEL FOR FRAMES & DOORS.
-3mm MILD STEEL GEAR TRAYS & GLAND PLATES.
-GEAR PLATES WHITE GLOSS.
-PLINTHS BLACK GLOSS.
- 10) - SGP = STEEL GLAND PLATE.
- 11) - AGP = ALUMINIUM GLAND PLATE.
- 12) - BBEP = BUS BAR EXTENSION PLATE.
- 13) - BBAP = BUS BAR ACCESS PLATE.
- 14) - SECTION WEIGHTS:
SECTION 1 - 1080KG
SECTION 2 - 880KG
SECTION 3 - 1080KG
SECTION 4 - 300KG
- 15) THERMAL IMAGING MESH PLATES FOR BUS BARS/CONNECTIONS.

CASTELL INTERLOCKS
CASTELL EXCHANGE BOX



INSERT BOTH A KEYS TO
REMOVE MBP KEY



REV	DATE	ENG	CAD	CKD	DESCRIPTION	CLIENT:-	DRAWING No.
0					ORIGINAL ISSUE		
						CONSULTANT:-	CAD
						PROJECT:-	ENGINEER
						TITLE:-	DRAWN DATE
							SCALE
							NTS
							REV
							0
							A3